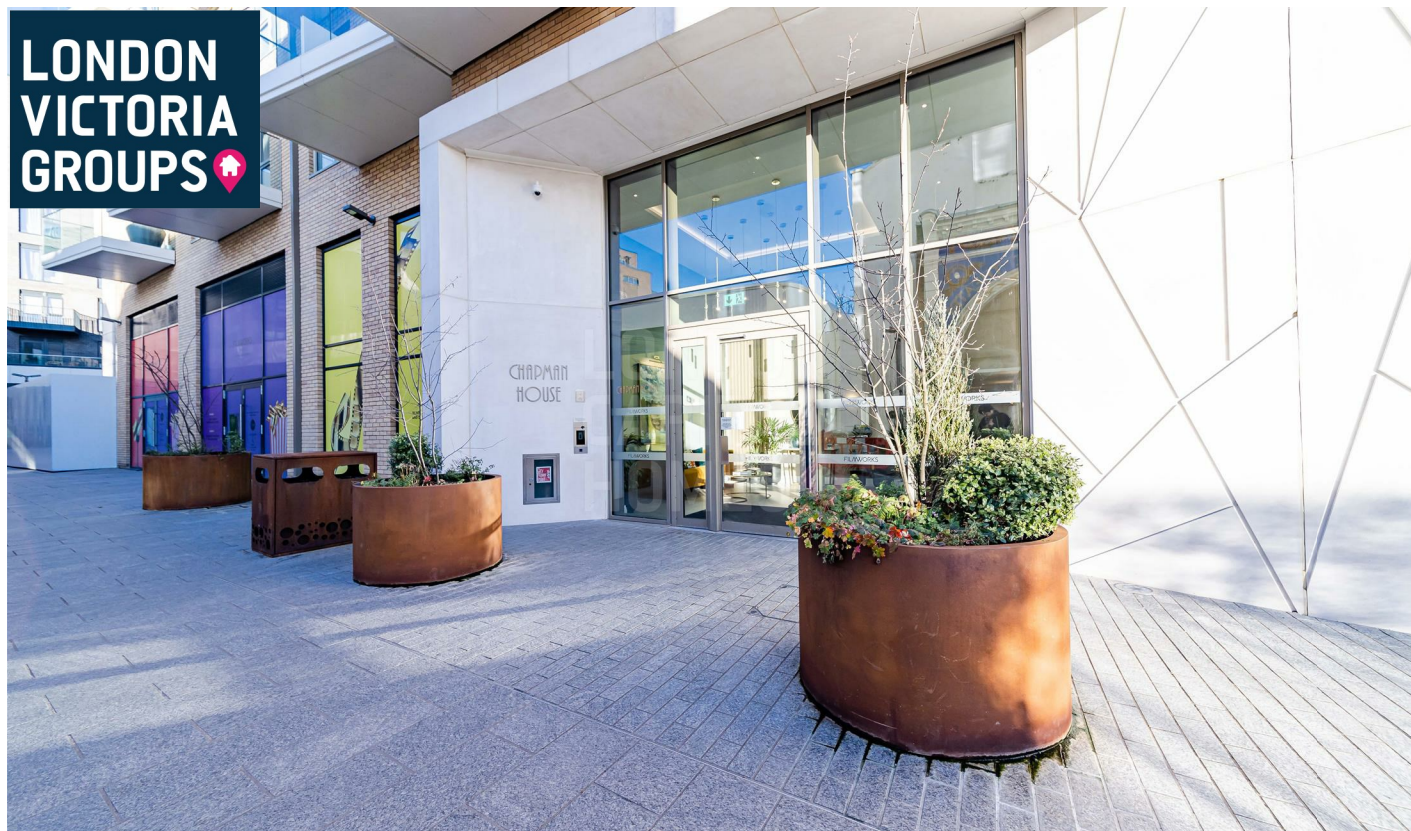


**LONDON  
VICTORIA  
GROUPS** 

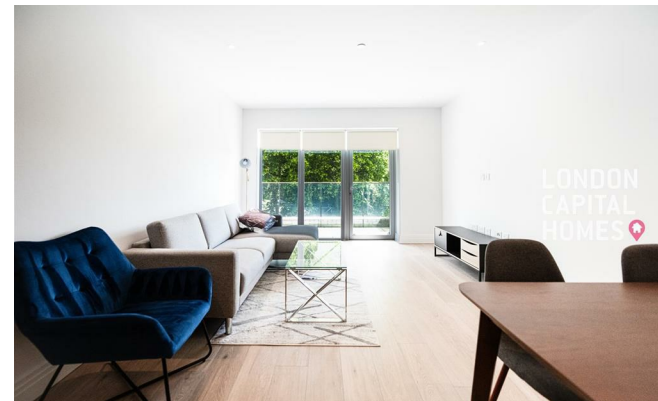


## Filmworks Walk

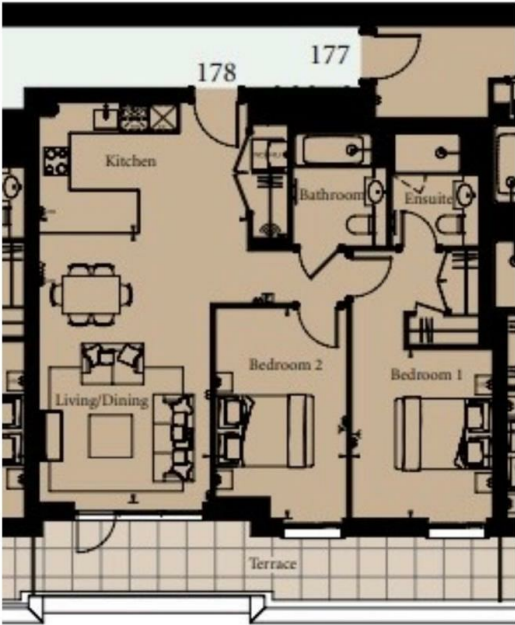
, London W5 5EF

- Filmworks
- Residents' Lounge
- EPC-B
- Landscaped Gardens
- Concierge Service
- CTB-F

**£930,000 Leasehold**



Local Authority **Ealing**  
Council Tax Band **F**  
EPC Rating **B**



APARTMENT 178 – 2 BEDROOM	92.1 sq m	991 sq ft*
Living/Dining	5.7m x 3.6m	18'8" x 11'10"
Kitchen	4.4m x 2.8m	14'6" x 9'0"
Bedroom 1	3.6m x 3.0m	11'8" x 9'9"
Bedroom 2	4.4m x 2.8m	14'7" x 9'1"
Terrace	14.4 sq m	155 sq ft

**London Office Office**  
Spaces Victoria, 25 Wilton Road, Pimlico,  
London, SW1V 1LW

**Contact**  
020 3084 3094  
[XL@londonvictoriagroups.co.uk](mailto:XL@londonvictoriagroups.co.uk)  
[www.londonvictoriagroups.co.uk](http://www.londonvictoriagroups.co.uk)

Agents Note: Whilst every care has been taken to prepare these particulars, they are for guidance purposes only. All measurements are approximate and for general guidance purposes only and whilst every care has been taken to ensure accuracy, they should not be relied upon and potential buyers/tenants are advised to recheck the measurements.

